



EVE-G87M2-CF-SC
EVE-G87M2-CFM-SC

BMW G87 M2

Installation Guide

All directions referring to left and right are based on looking at the engine from in front of the car.

Please take care when removing parts and fasteners. Contact your Eventuri dealer or email info@eventuri.net for any further information.

Tools Required:

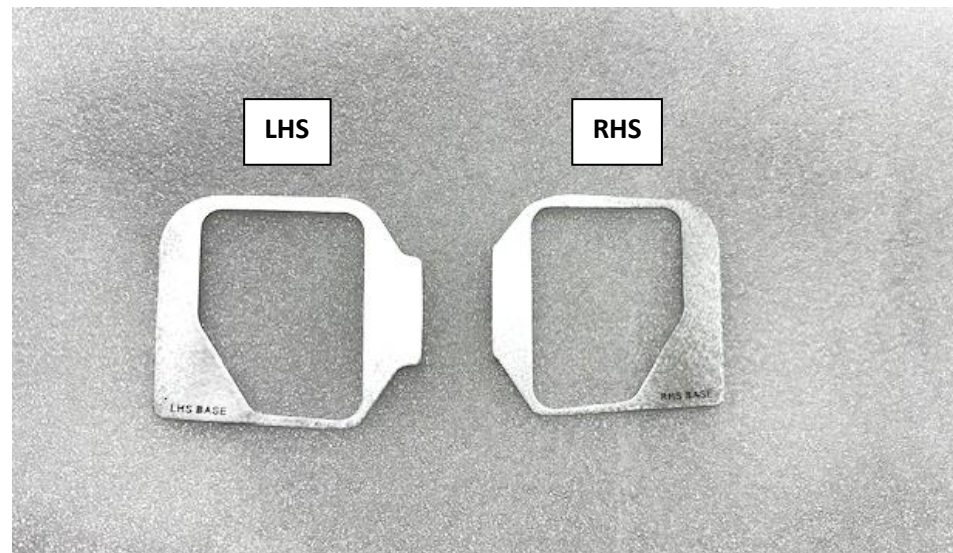
- 10mm, 8mm sockets
- T30 Torx
- Trim Tool
- Cutting tool – Dremmel or equivalent

Estimated Installation Time: 1 to 2 hours





1. We recommend having the front bumper professionally removed. It is held in place by a number of push clips, 10mm screws and T30 Torx screws. BMW M4 shown for illustration.



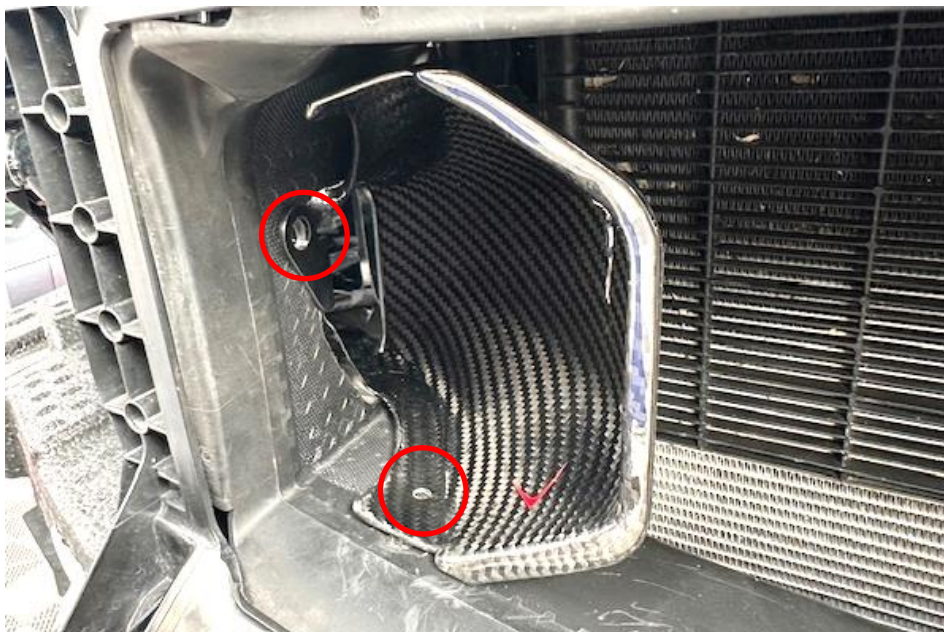
2. Take the supplied templates as shown.



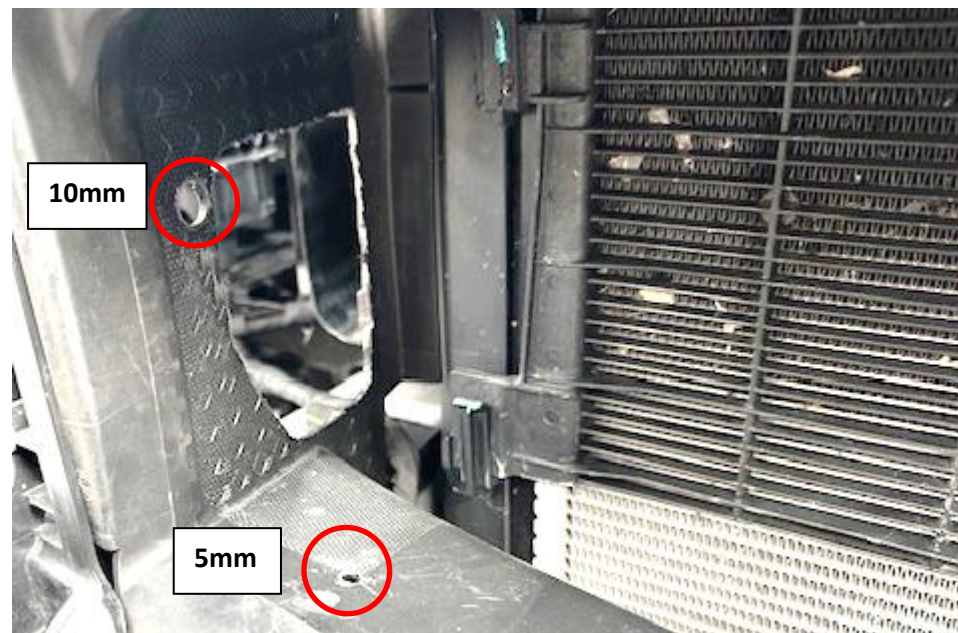
3. Take the LHS template and place it on the left side of the front shroud panel (left side as you look at the car from the front). The bottom of the template should touch the base panel and the back of the template should touch the rear panel as shown.



4. Mark the shape of the opening and then using a Dremel or similar, carefully cut away the shape.



5. Take the LHS Scoop and push it through the opening. The bracket should sit on the shroud panel and the base of the scoop should sit on the lower panel area as shown. Mark the position of the 2 holes as shown. One on the bracket and one through the scoop base.



6. Remove the scoop and drill the 2 holes. Larger hole for the bracket is 10mm and the smaller hole for the scoop is 5mm



7. Using the supplied push clips, insert the 10mm clip into the bracket and engage the top so it locks. Do the same with the smaller clip for the hole in the base of the scoop. Repeat for the other side.

You have now completed the installation of the Eventuri G87 M2 Scoops.

Eventuri cannot take responsibility for an incorrectly installed intake or any damage caused during installation.